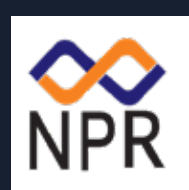


ANAYA

STEP INTO YOUR  
NEW BEGINNING



PURTI Homes

RERA Website:  
[www.rera.wb.gov.in](http://www.rera.wb.gov.in)

Rera No.:  
WBRERA/P/KOL/2024/002158

# Home is where the heart is

A foundation only begins a home when it is blessed by wrinkled hands. A roof only shelters a home when it stands as tall as the ones who hold the fort together. A window opens up a home to the world envisioned by the dreamers. Four walls seldom become a home without the crayon scribbles of faraway adventures and fairytales. All the things that make any space a home deserve to be celebrated. For, home is where the heart is.

Home is at **ANAYA**





CARE CREATES MEMORIES

# Prime Location. Unmatched Convenience!

All within 9 minutes

9 mins - Mani Square | Sector V

8 mins - Apollo Hospital

Salt Lake Stadium | Kankurgachi Crossing | Columbia Asia Hospital

6 mins - Phoolbagan Pantaloons | Manipal Hospital

5 mins - ITC Royal | JW Marriott | Sealdah Station | Phoolbagan Metro

4 mins - EM Bypass | Chingrighata Crossing

2 mins - CIT More Beliaghata

ANAAVA



Home is a  
timeline



Artist's Impression



A joy to  
dive in



Swimming Pool

ANAYA



A toast  
to luxury

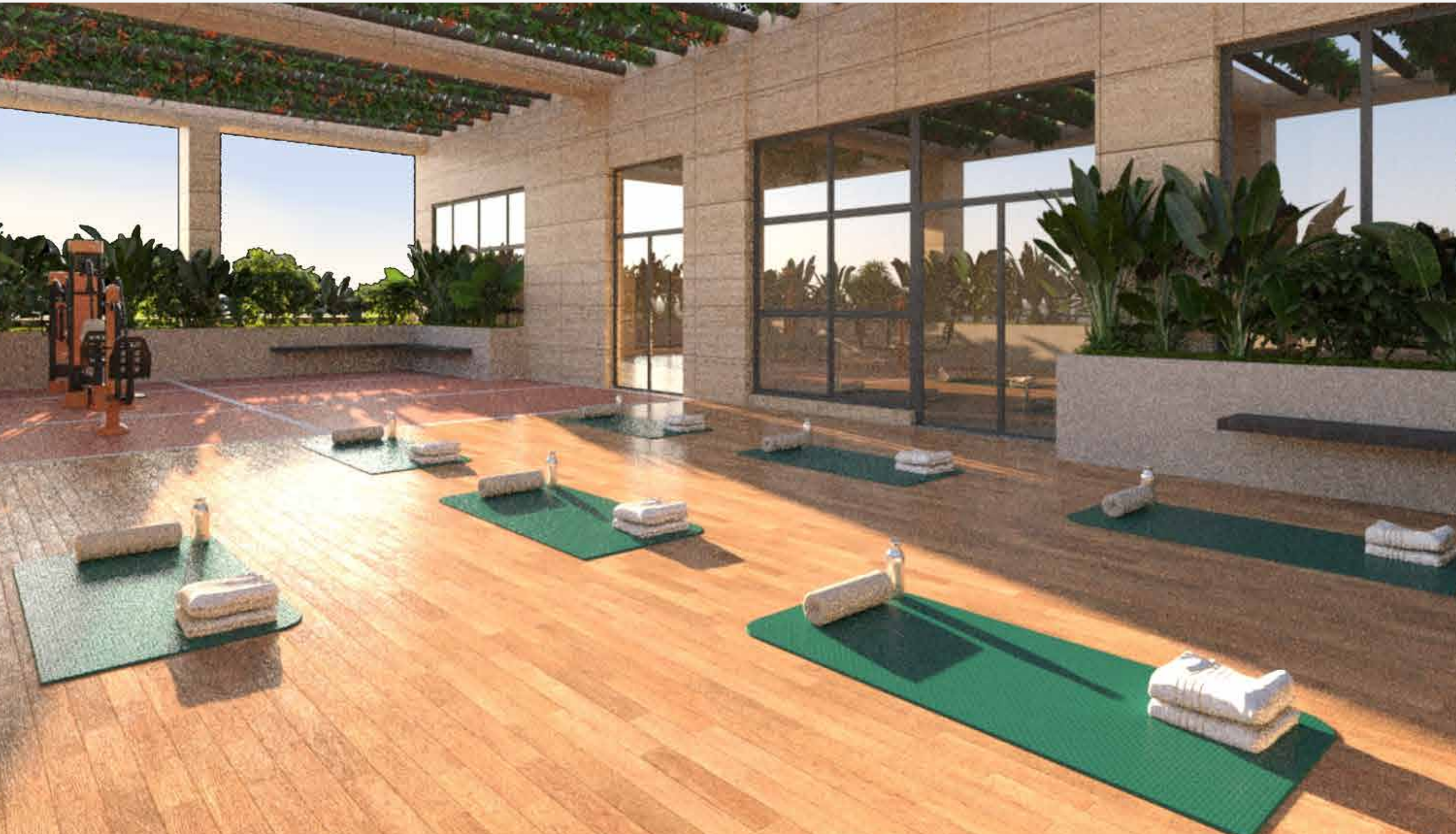
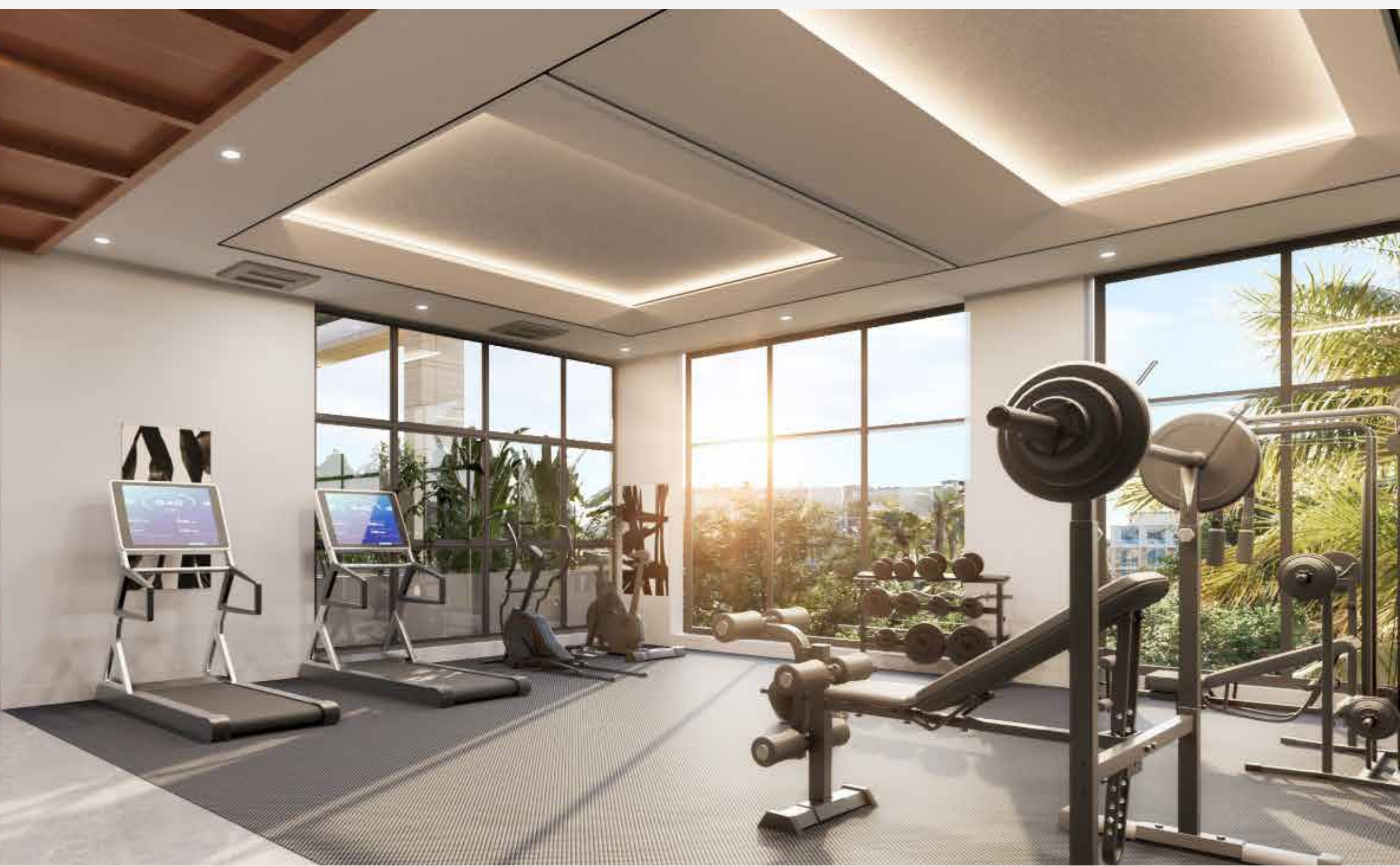


Banquet

ANAYA



# A sound body & soul

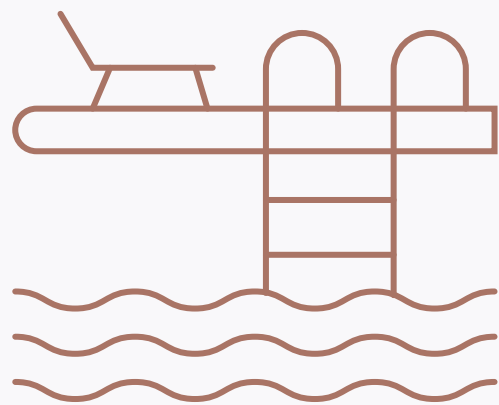


Gymnasium & Yoga Deck

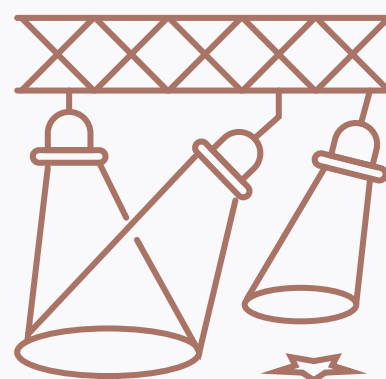
ANAYA



# Amenities



Rooftop Swimming Pool



Rooftop Party Zone



Indoor Games Room



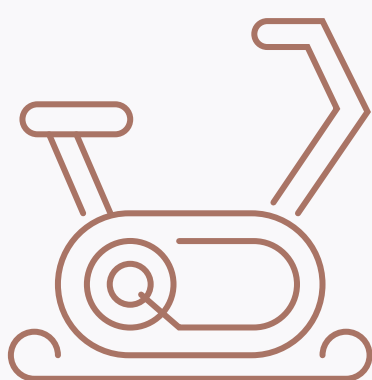
Community Hall with  
Landscaped Lawn



Toddler's Zone



Open Yoga/  
Meditation Deck



Gymnasium



Turf



# Master Plan

GROUND  
FLOOR PLAN



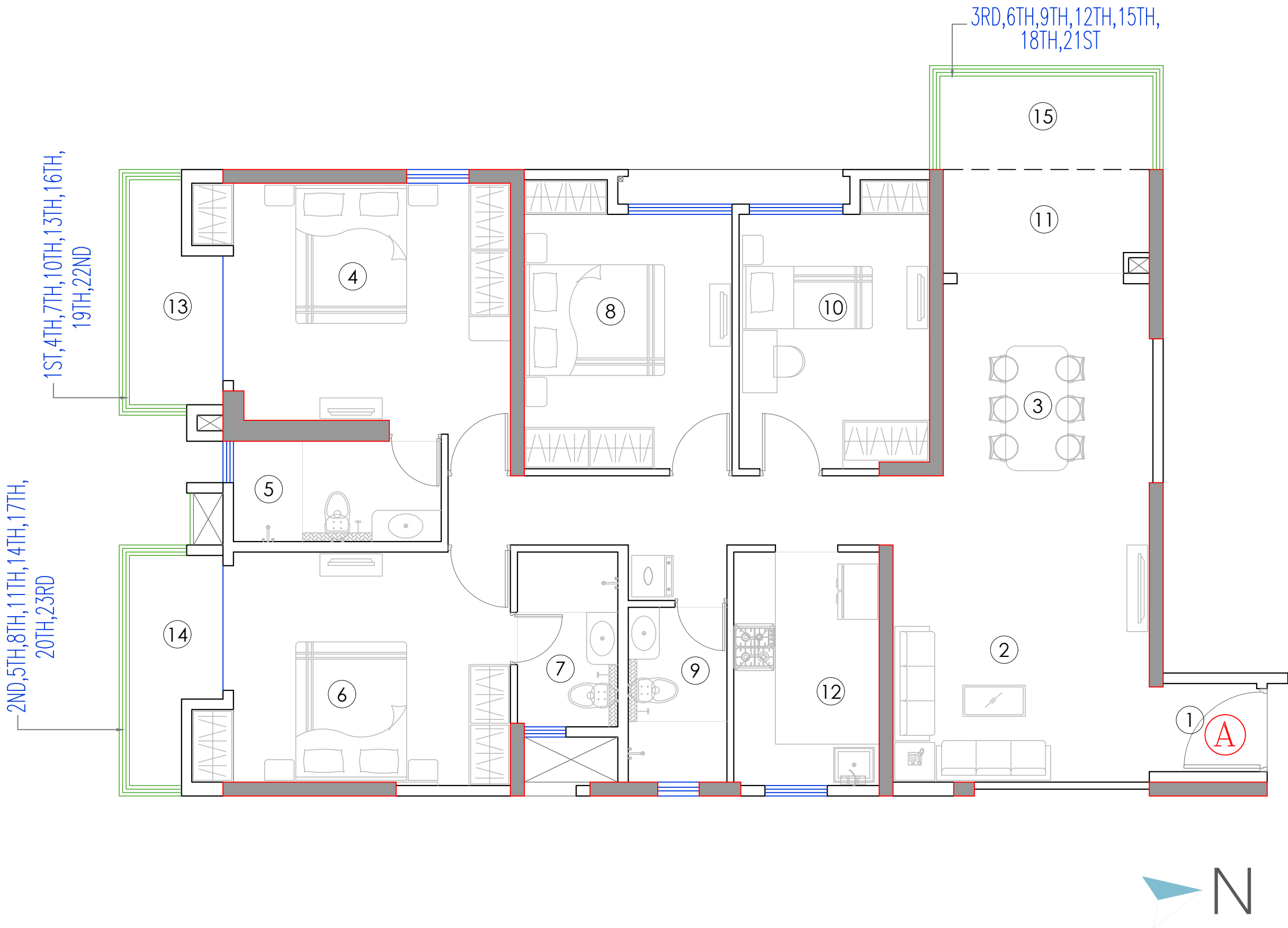
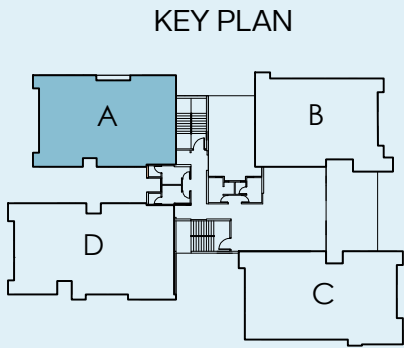
Master plan not in scale

No.	Legend
1	Entry And Exit
2	Gate House
3	Entrance Lobby
4	Covered Parking
5	Open Parking
6	Parking & Amenities Entrance Lobby
7	Driver's Waiting Room
8	Driveway
9	Green Area
10	Association Room
11	Services



# Floor Plan

## TYPE A



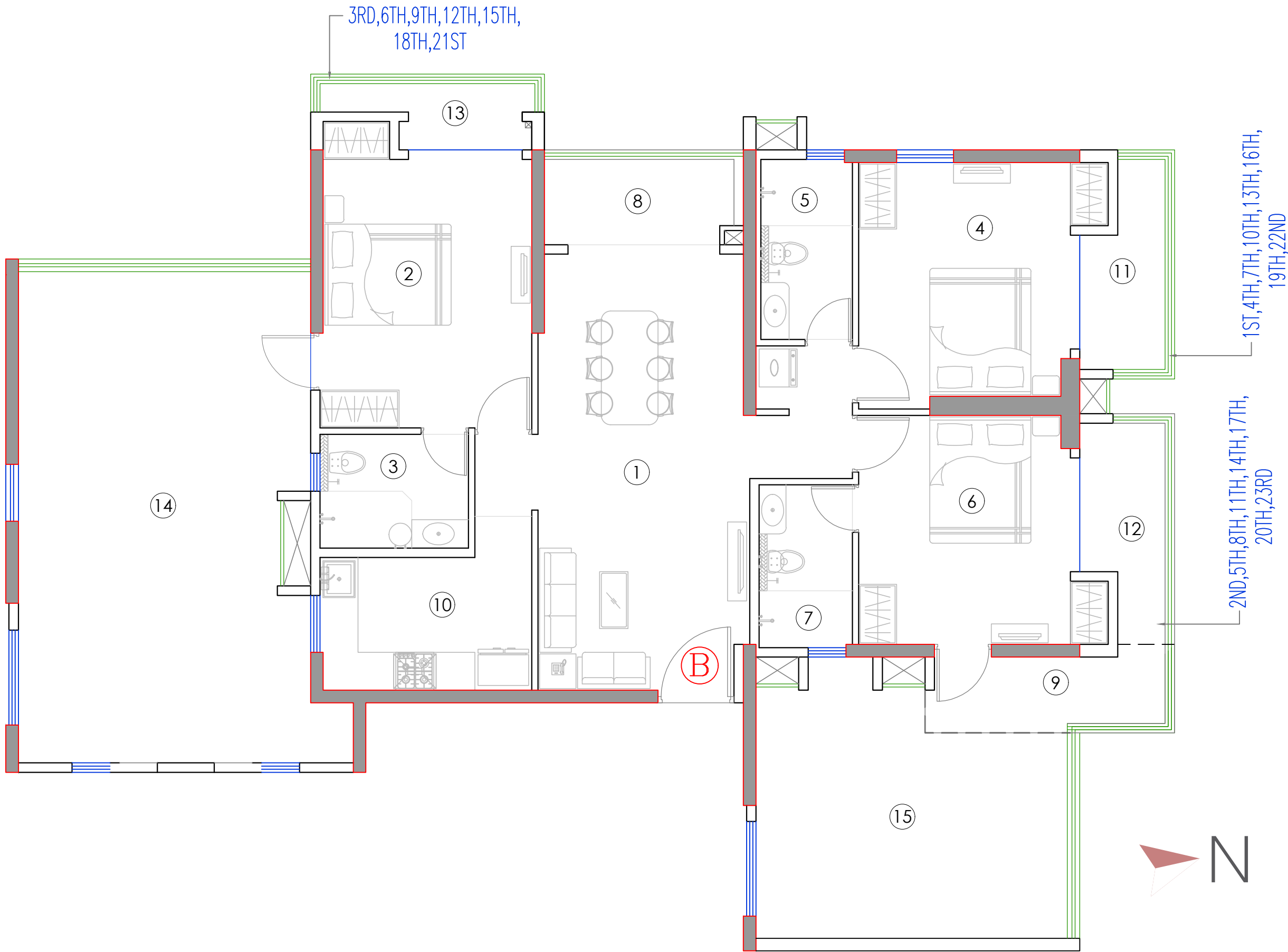
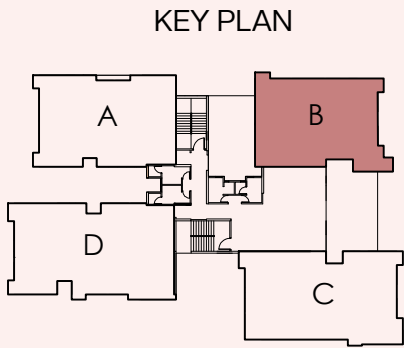
No.	Space Type	Dimension (Ft. Inch)
1	Foyer	4'3" X 5'4"
2	Living	12'3" X 14'8"
3	Dining	10'0" X 9'2"
4	Master Bedroom	15'3" X 12'0"
5	Toilet	9'11" X 4'10"
6	Bedroom	15'3" X 11'2"
7	Toilet	4'10" X 8'4"
8	Bedroom	9'11" X 13'10"
9	Common Toilet	4'9" X 8'4"
10	Bedroom	9'1" X 13'10"
11	Regular Balcony	9'10" X 5'0"
12	Kitchen	6'11" X 11'2'
13	Triple Height Balcony	5'0" X 11'9"
14	Triple Height Balcony	5'0" X 12'0"
15	Triple Height Balcony	11'2" X 5'0"

Floor	Carpet Area (sq. ft.)	Balcony/Utility/Triple Height Balcony Area (sq. ft.)	Built-up Area (sq. ft.)
1,4,7,10,13,16,19,22	1263	97	1458
2,5,8,11,14,17,20,23	1263	97	1458
3,6,9,12,15,18,21	1263	102	1463



# Floor Plan

## TYPE B



No.	Space Type	Dimension (Ft. Inch)
1	Living/Dining	11'1" X 22'10"
2	Master Bedroom	11'1" X 16'1"
3	Toilet	7'9" X 5'11"
4	Bedroom	13'1" X 12'11"
5	Toilet	4'10" X 9'5"
6	Bedroom	13'1" X 12'0"
7	Toilet	4'11" X 8'6"
8	Regular Balcony	10'5" X 5'0"
9	Regular Balcony	13'1" X 4'0"
10	Kitchen	11'1" X 6'11"
11	Triple Height Balcony	5'0" X 12'0"
12	Triple Height Balcony	5'0" X 12'1"
13	Triple Height Balcony	12'3" X 4'0"
14	Open Private Terrace - 1	15'4" X 26'5"
15	Open Private Terrace - 2	16'11" X 14'9"

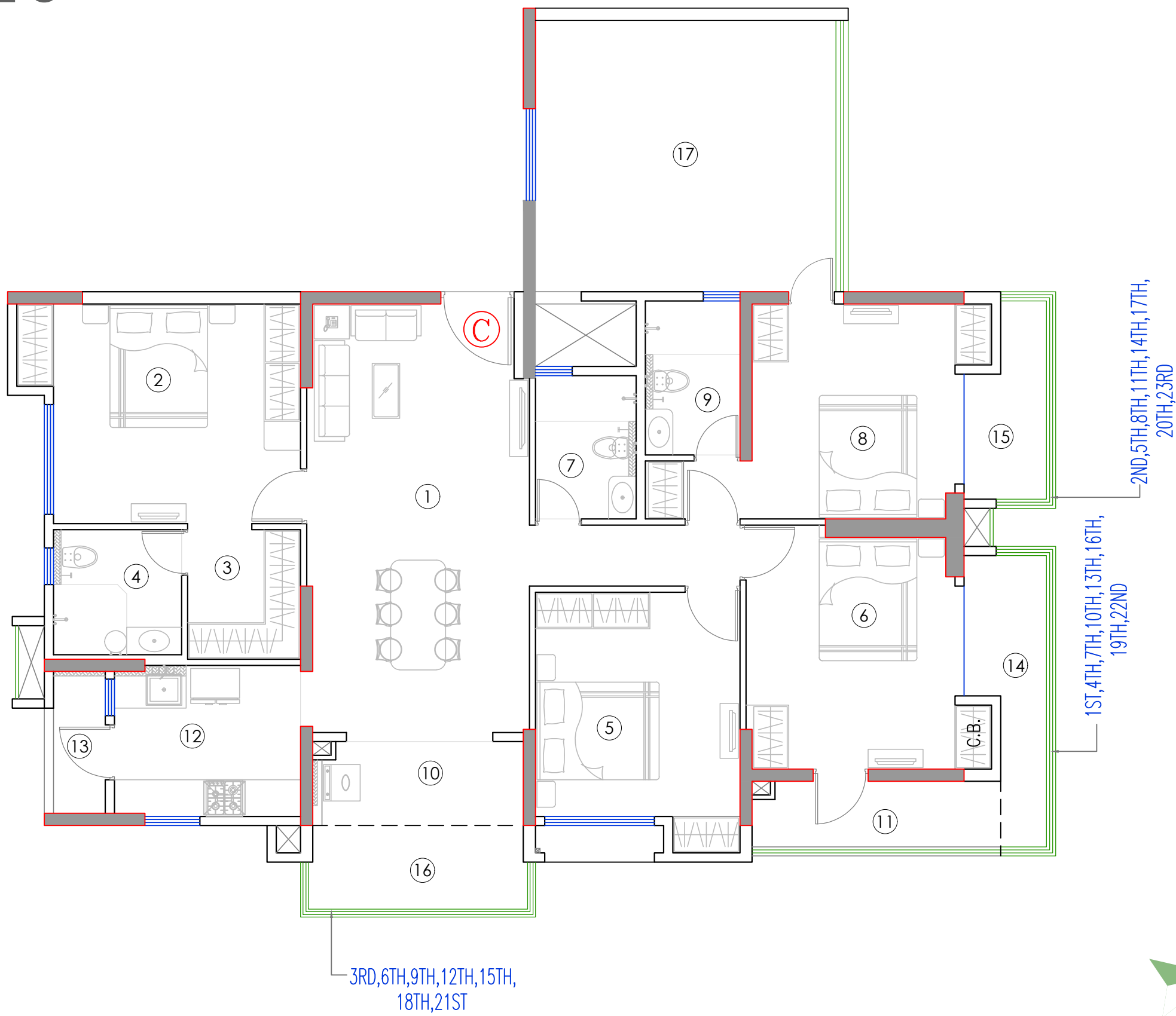
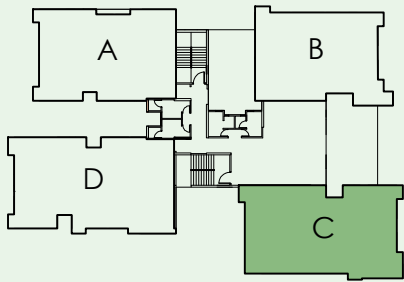
Floor	Carpet Area (sq. ft.)	Balcony/Utility/Triple Height Balcony Area (sq. ft.)	Private Open Terrace (sq. ft.)	Built-up Area (sq. ft.)
1	1057	154	633	1627
4,7,10,13,16,19,22	1057	154	-	1310
2,5,8,11,14,17,20,23	1057	156	-	1312
3,6,9,12,15,18,21	1057	143	-	1299



# Floor Plan

## TYPE C

KEY PLAN



No.	Space Type	Dimension (Ft. Inch)
1	Living/Dining	12'1" X 23'3"
2	Master Bedroom	15'5" X 11'11"
3	Wardrobe Space	6'1" X 7'0"
4	Toilet	6'11" X 6'9"
5	Bedroom	11'1" X 14'2"
6	Bedroom	13'4" X 13'3"
7	Common Toilet	5'6" X 7'9"
8	Bedroom	13'0" X 11'8"
9	Toilet	5'2" X 8'4"
10	Regular Balcony - 1	11'5" X 4'7"
11	Regular Balcony - 2	13'6" X 4'1"
12	Kitchen	10'1" X 8'2"
13	Utility Balcony	3'4" X 7'8"
14	Triple Height Balcony	5'0" X 16'9"
15	Triple Height Balcony	5'0" X 11'9"
16	Triple Height Balcony	12'9" X 5'0"
17	Open Private Terrace	16'11" X 14'9"

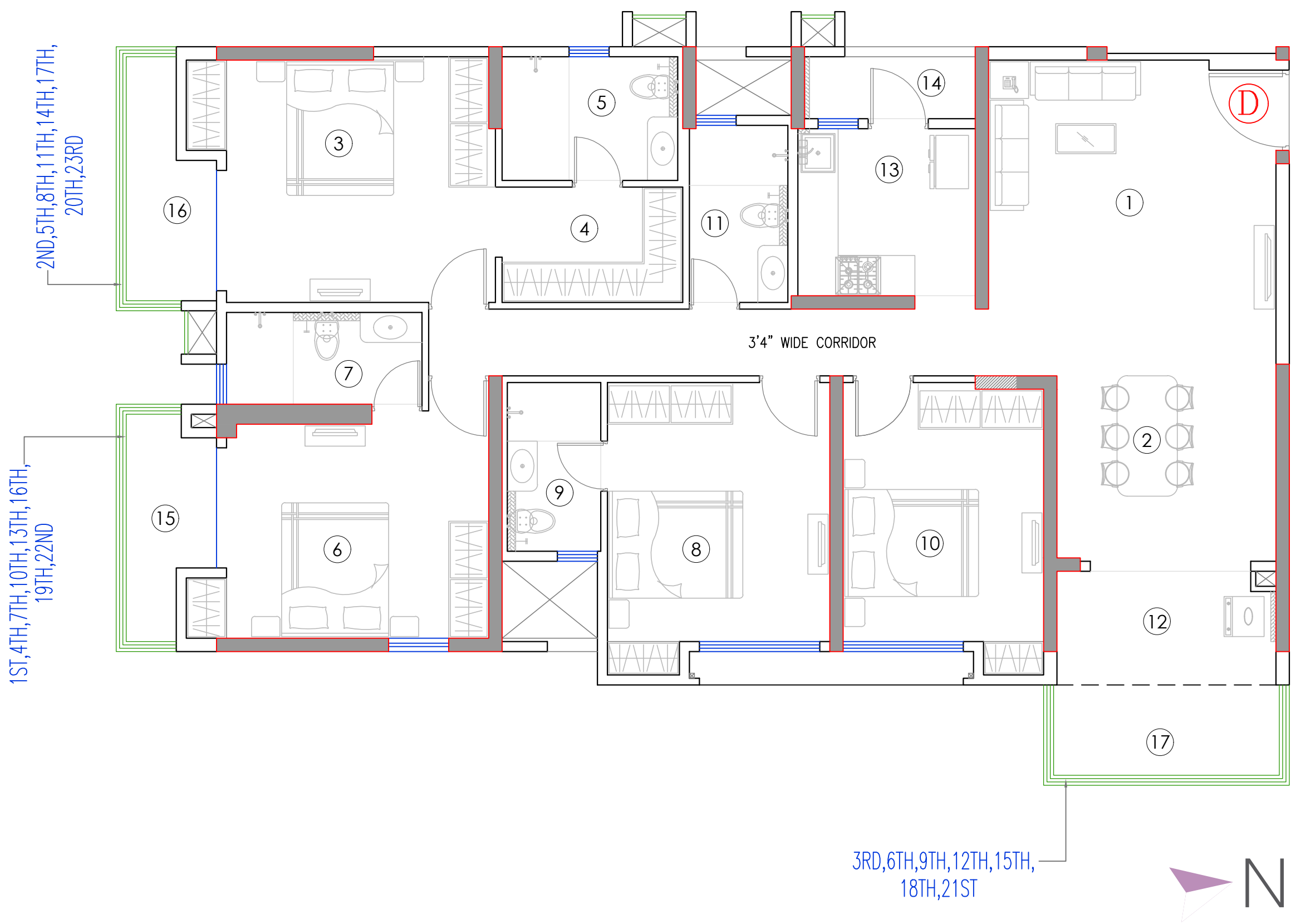
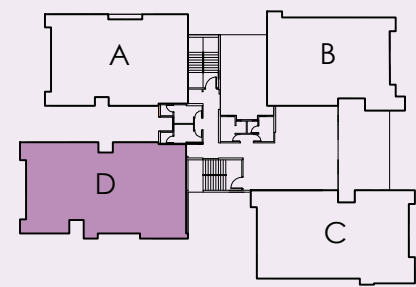
Floor	Carpet Area (sq. ft.)	Balcony/Utility/Triple Height Balcony Area (sq. ft.)	Private Open Terrace (sq. ft.)	Built-up Area (sq. ft.)
1	1289	195	273	1737
4,7,10,13,16,19,22	1289	195	-	1601
2,5,8,11,14,17,20,23	1289	179	-	1585
3,6,9,12,15,18,21	1289	192	-	1598



# Floor Plan

## TYPE D

KEY PLAN



No.	Space Type	Dimension (Ft. Inch)
1	Living	14'3" X 15'8"
2	Dining	10'10" X 9'2"
3	Master Bedroom	15'0" X 12'2"
4	Wardrobe Space	8'11" X 5'8"
5	Toilet	8'8" X 6'1"
6	Bedroom	15'0" X 11'3"
7	Toilet	9'8" X 4'7"
8	Bedroom	11'0" X 14'6"
9	Toilet	4'8" X 8'4"
10	Bedroom	9'11" X 12'10"
11	Common Toilet	4'11" X 8'9"
12	Regular Balcony	10'10" X 5'7"
13	Kitchen	8'9" X 8'3"
14	Utility Balcony	8'5" X 3'7"
15	Triple Height Balcony	5'0" X 12'3"
16	Triple Height Balcony	5'0" X 13'1"
17	Triple Height Balcony	12'2" X 5'0"

Floor	Carpet Area (sq. ft.)	Balcony/Utility/Triple Height Balcony Area (sq. ft.)	Built-up Area (sq. ft.)
1,4,7,10,13,16,19,22	1448	142	1708
2,5,8,11,14,17,20,23	1448	142	1708
3,6,9,12,15,18,21	1448	149	1715



# Developers

## NPR

Innovation, sustainability and class – these three words define the legacy of NPR. A diversified business Group, headquartered in Kolkata, NPR is passionate about providing quality services to its customers, partners and all other stakeholders. Driven by a passion for discovering new spaces and honing meticulousness through their projects, the Group is committed to innovation-led, exponential growth. NPR Group aims to enrich lives by nurturing and building trust and transparency across segments, to increase the value proposition for all.

## PURTI HOMES

At Purti Homes, we believe that everyone deserves to live in their dream home. And for us, that means something more than just a place for you to Live in - it has to be an innovative living space that embodies a way of life for you. It is a place you can truly call home.

Your needs play a huge role in what we build - not just your present needs, but also what you seek from your future. After all, your home is the setting for the future you will build, for the stories you will weave and for the many dreams that you hope to achieve.

And so, we rely not just on our experience and expertise, but also on you.



## DISCLAIMER

This brochure is purely conceptual and not a legal offering/legal document/offer or invitation to offer. The information contained in this brochure including elevation, photographs, renders, images, details, specifications, perspectives, finishes, amenities, facilities, etc. are only indicative and have been strictly provided only for representative and illustrative purposes. NPR PURTI CONBUILD LLP ("NPCL") reserves the right to amend/modify/alter/vary any of the above, at its discretion and without notice or any obligation. All fittings, accessories, equipment, furniture, etc. shown are only by way of suggestions as to the manner in which the subject areas may be used, and the same do not form a part of the specifications and/or the deliverables. Tiles, marble and granite have inherent characteristics of colour and grain variation. All images are an artist's impression, and not fully representative. Architectural features may differ in different apartments.